



# Caltech Student Vision Plan

## SUMMARY OF BENEFITS

### Additional discounts

**40% OFF**

Complete pair of prescription eyeglasses

**20% OFF**

Non-prescription sunglasses

**20% OFF**

Remaining balance beyond plan coverage

These discounts are for in-network providers only

### Take a sneak peek before enrolling

- You're on the INSIGHT Network
- For a complete list of **in-network** providers near you, use our **Enhanced** Provider Locator on [www.eyemed.com](http://www.eyemed.com) or call **1-866-804-0982**.
- For Lasik providers, call **1-877-5LASER6**.

Vision Care Services	In-Network Member Cost	Out-of-Network Reimbursement
<b>Exam With Dilation as Necessary</b>	\$10 Co-pay	Up to \$49
<b>Retinal Imaging</b>	Up to \$39	N/A
<b>Frames</b>	\$0 Co-pay; \$100 allowance; 20% off balance over \$100	Up to \$50
<b>Standard Plastic Lenses</b>		
Single Vision	\$25 Co-pay	Up to \$25
Bifocal	\$45 Co-pay	Up to \$40
Trifocal	\$45 Co-pay	Up to \$55
Standard Progressive Lens	\$110 Co-pay	Up to \$40
Premium Progressive Lens <sup>4</sup>	\$130 Co-pay - \$155 Co-pay	
Tier 1	\$130 Co-pay	Up to \$40
Tier 2	\$140 Co-pay	Up to \$40
Tier 3	\$155 Co-pay	Up to \$40
Tier 4	\$110 Co-pay, 80% of charge less \$120	Up to \$40
<b>Lens Options (paid by the member and added to the base price of the lens)</b>		
UV Treatment	\$15	N/A
Tint (Solid and Gradient)	\$15	N/A
Standard Plastic Scratch Coating	\$15	N/A
Standard Polycarbonate	\$40	N/A
Standard Polycarbonate - Kids under 19	\$40	N/A
Standard Anti-Reflective Coating	\$45	N/A
Premium Anti-Reflective Coating <sup>4</sup>	\$57 - \$68	N/A
Tier 1	\$57	N/A
Tier 2	\$68	N/A
Tier 3	80% of charge	N/A
Photochromic/Transitions	\$75	N/A
Polarized	20% off retail price	N/A
Other Add-Ons and Services	20% off retail price	N/A
<b>Contact Lens Fit and Follow-Up (Contact lens fit and two follow up visits are available once a comprehensive eye exam has been completed)</b>		
Standard Contact Lens Fit & Follow-Up	Up to \$40	N/A
Premium Contact Lens Fit & Follow-Up	10% off retail	N/A
<b>Contact Lenses</b>		
Conventional	\$0 Co-pay; \$\$115 allowance; 15% off balance over \$\$115	Up to \$92
Disposable	\$0 Co-pay; \$\$115 allowance; plus balance over \$\$115	Up to \$92
Medically Necessary	\$0 Co-pay, Paid-in-Full	Up to \$210
<b>Laser Vision Correction</b>		
Lasik or PRK from U.S. Laser Network	15% off the retail price or 5% off the promotional price	N/A
<b>Hearing Care</b>		
Hearing Health Care from Amplifon Hearing Network	40% off hearing exams and a low price guarantee on discounted hearing aids	N/A
<b>Additional Pairs Benefit</b>	Members also receive a 40% discount off complete pair eyeglass purchase and 15% discount off conventional contact lenses once the funded benefit has been used.	N/A
<b>Frequency</b>		
Examination	Once every 12 months	
Lenses or Contact Lenses	Once every 12 months	
Frame	Once every 12 months	

<sup>4</sup>Premium progressives and premium anti-reflective designations are subject to annual review by EyeMed's Medical Director and are subject to change based on market conditions. Fixed pricing is reflective of brands at the listed product level. All providers are not required to carry all brands at all levels. Benefits are not provided from services or materials arising from: 1) Orthoptic or vision training, subnormal vision aids and any associated supplemental testing; Aniseikonic lenses; 2) Medical and/or surgical treatment of the eye, eyes or supporting structures; 3) Any eye or Vision Examination, or any corrective eyewear required by a Policyholder as a condition of employment; Safety eyewear; 4) Services provided as a result of any Workers' Compensation law, or similar legislation, or required by any governmental agency or program whether federal, state or subdivisions thereof; 5) Plano (non-prescription) lenses; 6) Non-prescription sunglasses; 7) Two pair of glasses in lieu of bifocals; 8) Services or materials provided by any other group benefit plan providing vision care 9) Services rendered after the date an Insured Person ceases to be covered under the Policy, except when Vision Materials ordered before coverage ended are delivered, and the services rendered to the Insured Person are within 31 days from the date of such order. 10) Lost or broken lenses, frames, glasses, or contact lenses will not be replaced except in the next Benefit Frequency when Vision Materials would next become available. Benefits may not be combined with any discount, promotional offering, or other group benefit plans. Standard/Premium Progressive lens not covered-fund as a Bifocal lens. Standard Progressive lens covered-fund Premium Progressive as a Standard. Underwritten by Fidelity Security Life Insurance Company of Kansas City, Missouri, except in New York. The Certificate of Insurance is on file with your employer. Benefit allowance provides no remaining balance for future use within the same benefit year. Fees charged for a non-insured benefit must be paid in full to the Provider. Such fees or materials are not covered.

# What's in it for me?

Options. It's simple really. We're dedicated to helping you see clearly – and that's why we've built a network that gives you lots of choices and flexibility. You can choose from thousands of independent and retail providers to find the one that best fits your needs and schedule. No matter which one you choose, our plan is designed to be easy-to-use and help you access the care you need. Welcome to EyeMed.



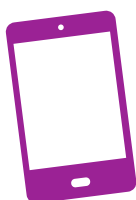
Benefits Snapshot	With EyeMed	Out-of-Network Reimbursement
<b>Exam with dilation as necessary</b> (Once every 12 months)	\$10 Co-pay	Up to \$49
<b>Frames</b> (Once every 12 months)	\$0 Co-pay; \$100 allowance; 20% off balance over \$100	Up to \$50
<b>Single Vision Lenses</b> (Once every 12 months)	\$25 Co-pay	Up to \$25
Or		
<b>Contacts</b> (Once every 12 months)	\$0 Co-pay; \$115 allowance; plus balance over \$115	Up to \$92

## And now it's time for the breakdown . . .

Here's an example of what you might pay for a pair of glasses with us vs. what you'd pay without vision coverage. So, let's say you get an eye exam and choose a frame that costs \$163 with single vision lenses that have UV and scratch protection. Now let's see the difference...

**71% SAVINGS with us\***

With EyeMed	Without Insurance**
Exam \$10 Co-pay	Exam \$106
Frame \$163 -\$100 allowance \$63 -\$12.60 (20% discount off balance) \$50.40	Frame \$163
Lens \$25 Co-pay \$15 UV treatment add-on +\$15 Scratch coating add-on \$55	Lens \$78 \$23 UV treatment add-on +\$25 Scratch coating add-on \$126
<b>Total \$115.40</b>	<b>Total \$395</b>



## Download the EyeMed Members App

It's the easy way to view your ID card, see benefit details and find a provider near you.



\*This is a snapshot of your benefits. Actual savings will depend on provider, frame and lens selections. \*\*Based on industry averages.